

# MONTHLY MEMBERSHIP PROGRESS REPORT

LOCATION WASHINGTON

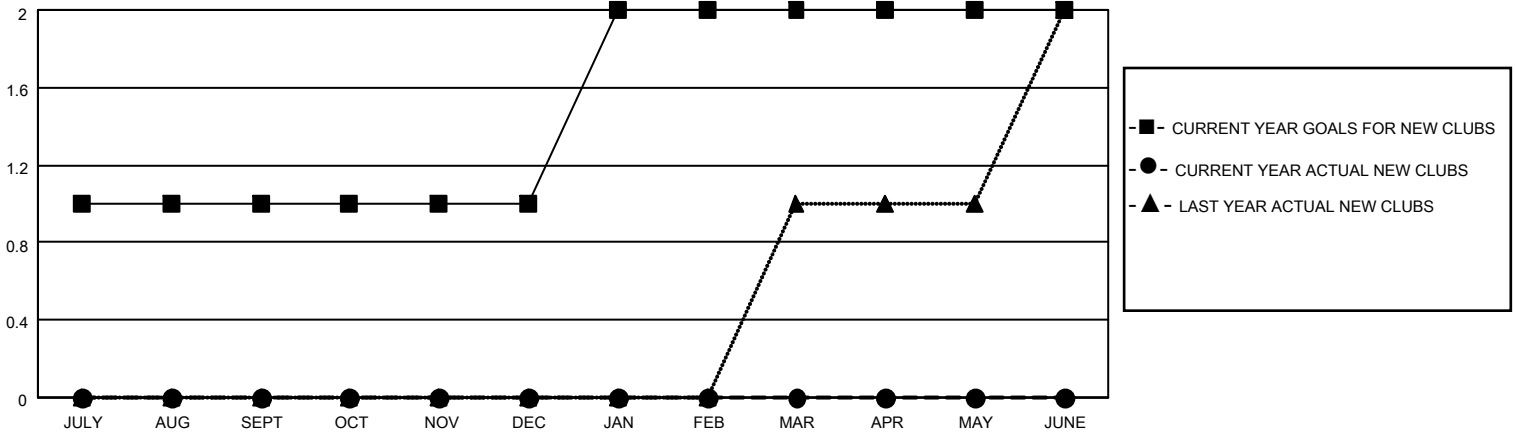
District 19 I

Results as of: 4/30/2021

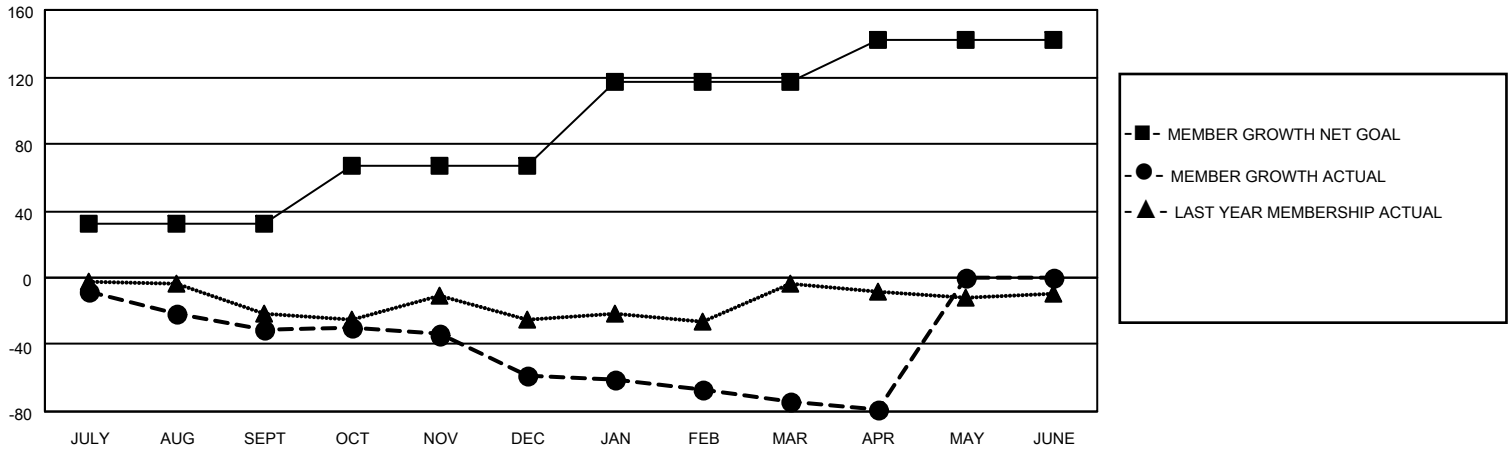
Clubs			
RESULTS FOR 2020-2021			
QUARTER	NEW CLUB GOAL	NEW CLUBS	DROPPED CLUBS
JULY/AUG/SEPT	1	0	0
OCT/NOV/DEC	0	0	0
JAN/FEB/MAR	1	0	1
APR/MAY/JUNE	0	0	0

Members			
RESULTS FOR 2020-2021			
QUARTER	MEMBER GROWTH NET GOAL	MEMBER GROWTH ACTUAL	DROPPED MEMBERS ACTUAL (including transfers)
JULY/AUG/SEPT	32	4	35
OCT/NOV/DEC	35	28	51
JAN/FEB/MAR	50	14	23
APR/MAY/JUNE	25	8	13

**GOALS AND ACTUAL NEW CLUBS CUMULATIVE**



**GOALS AND ACTUAL MEMBERS CUMULATIVE**



**DROPPED CLUBS: 1**

18 CLUBS OF 50 ADDED 1 OR MORE NEW MEMBERS

**GENDER DISTRIBUTION**

MALE 707 (61.16%)  
FEMALE 449 (38.84%)

**DROPPED MEMBERS**

DECEASED	18
CLUB CANCELLED	0
OTHER	104
<b>TOTAL</b>	<b>122</b>

[CLICK HERE FOR CUMULATIVE MEMBERSHIP DATA](#)

TOTAL FAMILY UNIT MEMBERS	225
FAMILY MEMBERS PAYING HALF DUES	113